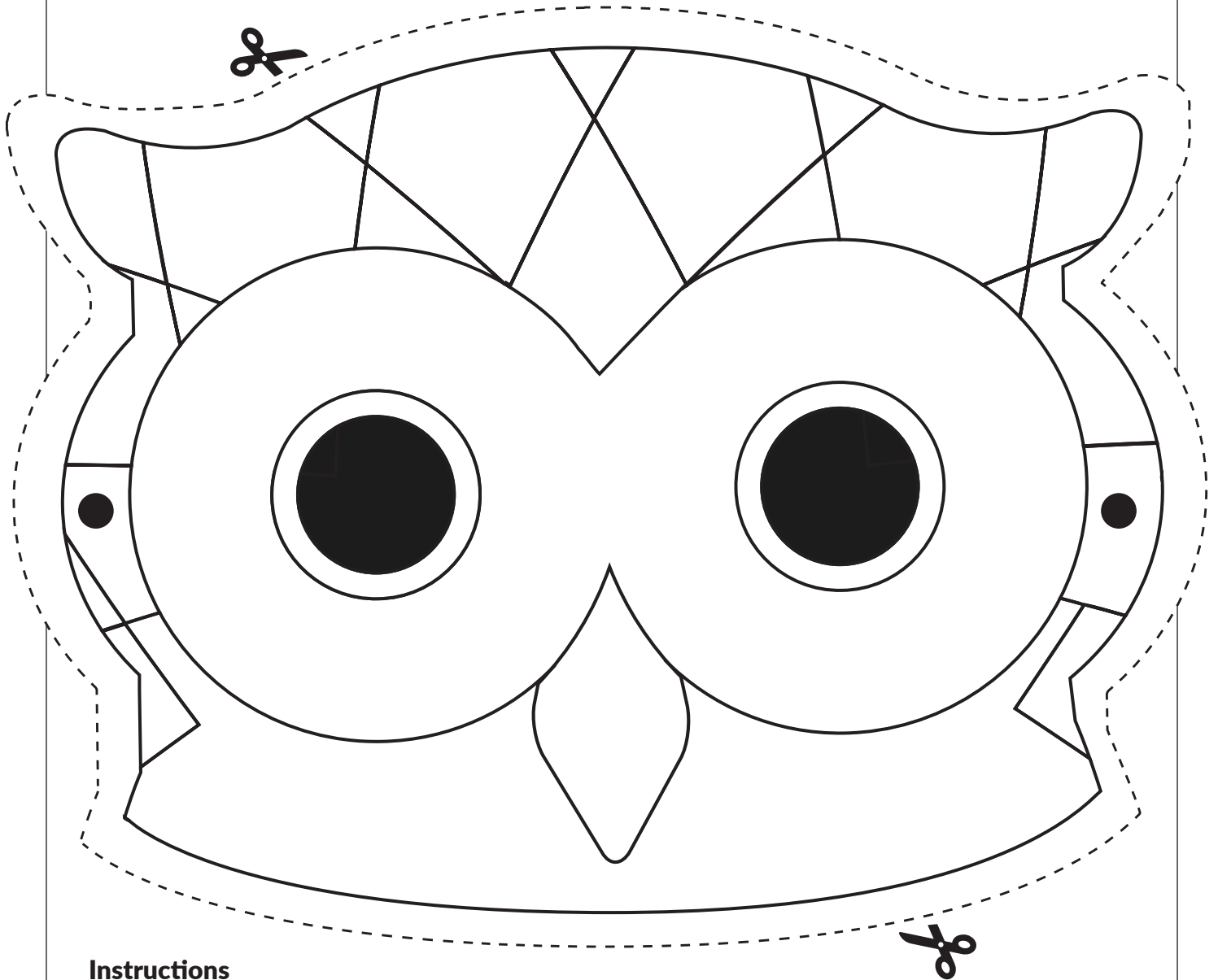
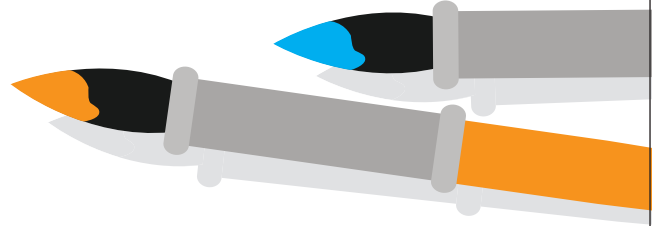


DESIGN YOUR VERY OWN OWL MASK!



Instructions

1. Colour in the mask outline above.
2. Use a pair of scissors and hole punch to cut along the dotted line and make holes for the eyes and string – ask an adult for help with this.
3. Tie string or ribbon to the mask so that it can be worn over your eyes. An adult can help you to get the right length so it doesn't slip!

